

## Hole Drilling EDM

# K3HS



### Standard Features

- LK2 controller
- Sodick Motion Controller
- Dielectric fluid cooling unit
- 15" TFT colour screen
- Remote controller
- LN Assist software for optimum condition search
- Automatic depth measurement
- Through-hole detection
- AEF (Automatic Electrode Feeder)
- Spindle with max. 1,000 rpm
- LAN interface
- USB port
- Work light

### Technical Specifications

X/Y/Z axis travel (mm)	300 x 400 x 300
W-axis stroke (mm)	230 (NC control: option)
Table dimensions (mm)	480 x 790
Work-tank dimensions (W x D x H, mm)	470 x 780 x 285
Max. work-piece weight (kg)	300
Distance from guide bottom to table top (mm)	55 ~ 285
Electrode diameter (mm)	0.25 ~ 3.0
Distance from floor to table top (mm)	640
Machine tool dimensions (W x D x H, mm)	1,495 x 1,340 x 2,255
Machine installation space (W x D mm)	1,495 x 1,740
Machine weight (kg)	1,280
Total power input	3-phases, 50/60Hz, 6.5KvA

### Options

Column up (100/200mm)
Intermediate guide
Rotary table
Oscilloscope
W-axis digital
LK20 – 8-axis controller

### Dielectric tank

External dim. (W x D x H, mm)	705x435x1,410
Weight (empty, kg)	175
Dielectric fluid	De-ionized Water or V-KS fluid
Capacity (l)	150
Filtration method	Replaceable paper filter (HF-17)



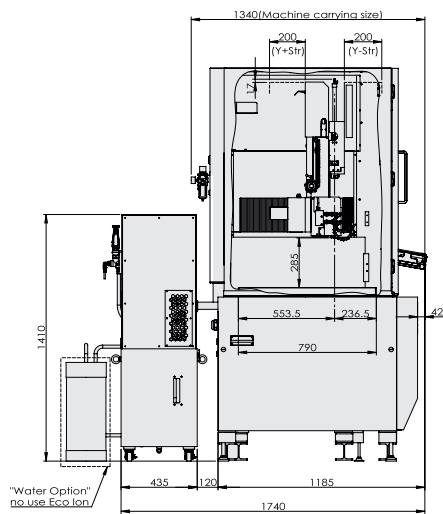
create your future

# Hole Drilling EDM

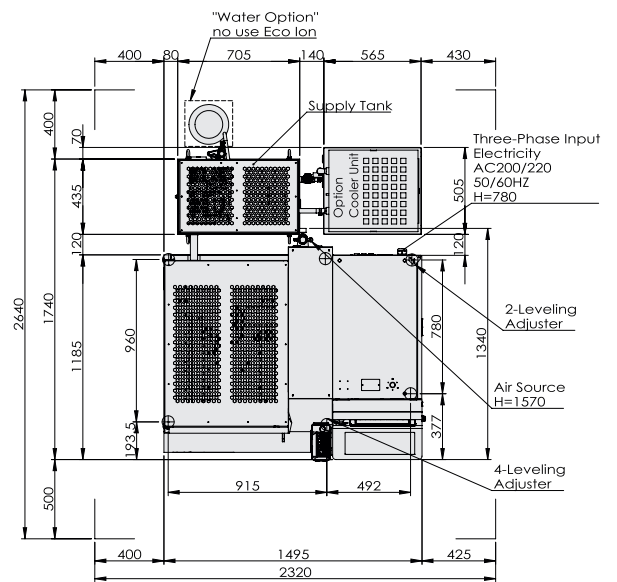
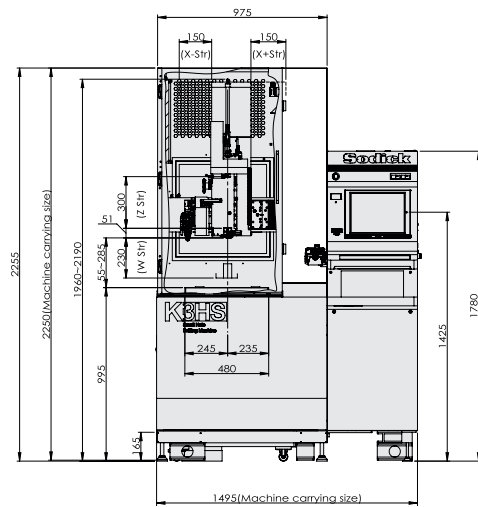
# K3HS



Side View



Front View



Top View

Due to ongoing research, specifications are subject to change without prior notice.



Sodick Europe Ltd.

Agincourt Road  
Warwick, CV34 6XZ  
United Kingdom

*create your future*

Sodick Contact

Phone +44 (0) 19 2669 8888  
email [europe@sodick.eu.com](mailto:europe@sodick.eu.com)  
online [www.sodick.org](http://www.sodick.org)