

# AQ1500L

The World's Biggest Linear Motor Drive Wire-cut EDM



- 10 year warranty on positioning accuracy
- Linear motor (X, Y, U, V axis)
- Absolute linear scale (X, Y, U, V axis)
- Ceramic components
- Linear motor cooling unit
- LP2WH high speed generator
- Perfect Active Control: 1Gbit/sec communication technology
- Intelligent Q3vic EDW
- Remote controller
- Rise and fall work tank
- Improved ease of operation
- High speed electrolysis free circuit
- SODICK Fine Corner Control
- Energy saving circuit



- Super PIKA finishing circuit
- FTII (Fine pick-up function)
- Automatic water level control
- Super jet AWT (Automatic wire threader)
- Wire bobbin of 20kg
- Wire end remover
- Wire chopper
- Dielectric cooling unit
- Active Power Restart (UPS)
- Voltage stabiliser
- LAN interface
- 15" TFT screen
- USB port
- Totalizing hour meter
- Work light

## Technical Specifications

|   |                       |
|---|-----------------------|
| XYZ axis travel (mm)                    | 1,500 x 1,000 x 600   |
| UV axis travel                          | 1,520 x 1,020         |
| Work tank dimensions (W x D, mm)        | 2,124 x 1,600         |
| Max. workpiece weight (kg)              | 8000                  |
| Taper angle                             | ±30°                  |
| Wire diameter (mm)                      | Ø 0.15~ Ø 0.33        |
| Wire tension (N)                        | 3~23                  |
| Max. wire speed (mm/sec)                | 420                   |
| Distance from floor to table top (mm)   | 1,200                 |
| Machine tool dimensions (W x D x H, mm) | 5,600 x 4,435 x 2,930 |
| Machine installation dimensions (mm)    | 6,700 x 5,765         |
| Machine weight (kg)                     | 15,000                |

## Dielectric tank

|                                     |   |
|-------------------------------------|---|
| External dimensions (W x D x H, mm) | -   |
| Tank weight (kg)                    | 1,030 (main)<br>1,010 (sub)                     |
| Capacity (l)                        | 5,000   |
| Filtration method                   | 4 replaceable paper filters (internal pressure) |

## Options

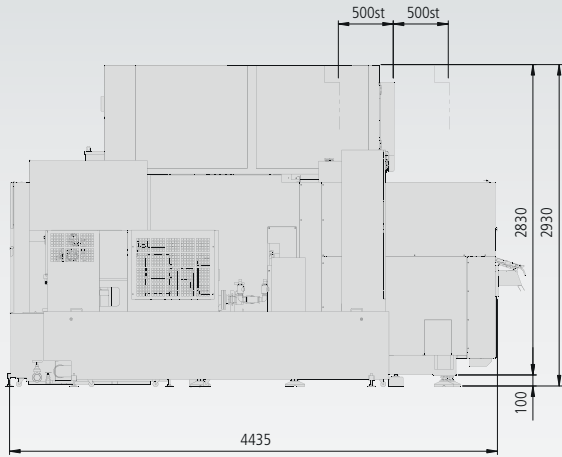
|   |
|---|
| Taper flex 45 (for taper cutting up to 45°) |
| Oscilloscope                                |
| Custom color                                |

# AQ1500L

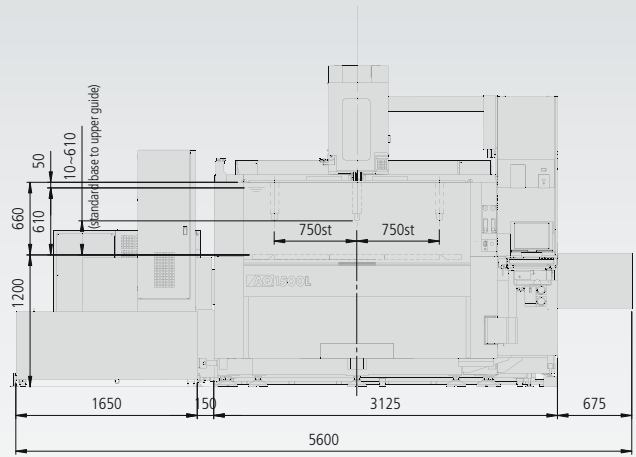
## Technical Specifications



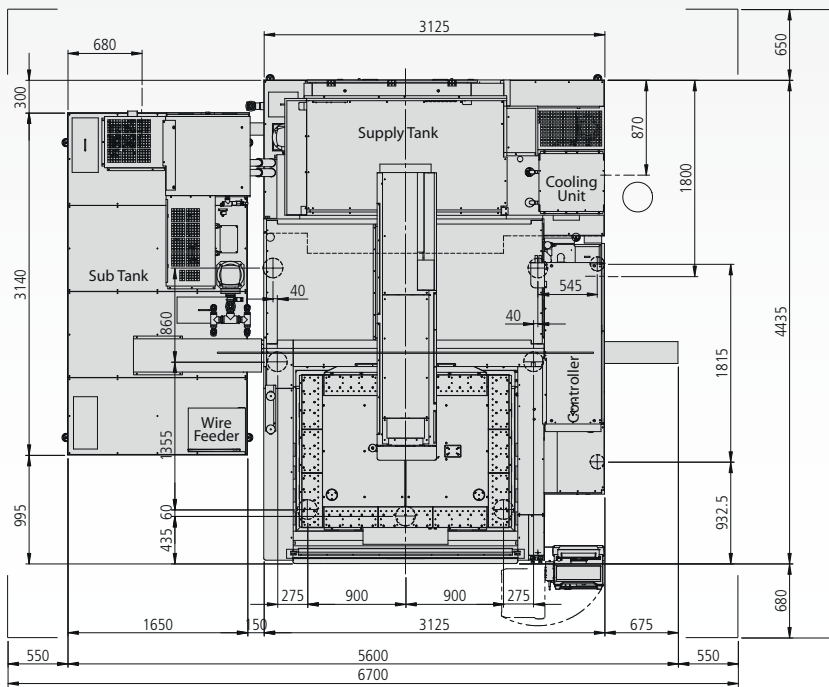
Side View



Front View



Top View



Due to ongoing research, specifications are subject to change without prior notice.

# Sodick

*create your future*

Sodick Europe Ltd.  
Rowley Drive, Baginton  
Coventry, CV3 4FG  
United Kingdom

### Sodick Contact

email [europa@sodick.eu.com](mailto:europa@sodick.eu.com)  
online [www.sodick.org](http://www.sodick.org)  
Phone +44 (0) 24 7621 4314