

AQ20L

The XXXXL Linear



- 10 year warranty on positioning accuracy
- Linear motor (X/Y/Z axis)
- Absolute linear scale (X/Y/Z axis)
- Ceramic components
- Linear motor cooling unit
- Dielectric fluid cooling unit
- 1Gbit/sec communication technology
- SVC circuit
- "SGF Plus" Nano-Wear Discharge Unit

- Improved Ease of Operation
- Remote controller
- LN Professional software for optimum condition search
- Clamping chuck
- LAN interface
- USB port
- 15" TFT screen
- Work light

Technical Specifications	
XYZ axis travel (mm)	1200 x 2000 x 600
Table dimensions (mm)	1500 x 2000
Worktank dimensions (mm)	1900 x 2590 x 800
Dielectric level (min ~ max, mm)	400 ~ 750
Max. workpiece weight (kg)	10,000
Max. electrode weight (kg)	100
Distance from floor to table top (mm)	1000
Machine tool dimensions (W x D x H mm, Incl. power supply and dielectric tank)	3550 x 5785 x 4220
Step resolution (mm)	0.0001
Machine weight (kg)	22000
Controlled axis	4
Air pressure (Automatic Clamping chuck, MPa)	0.65

Dielectric tank	
External dimensions (W x D x H, mm)	3340 x 2450 x 2550
Weight (empty, kg)	3400
Dielectric fluid	Oil
Capacity (l)	6000
Filtration method	12 Replaceable paper filters (MF-2400)

C Axis (optional)	
Resolution	0.001°
Rotational speed (min ~ max rpm, continuous)	2 ~ 20

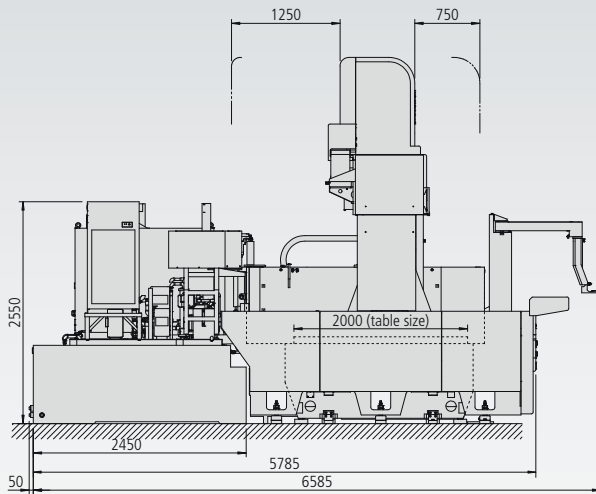
Options	
Oscilloscope	6/8-axis simultaneous (factory option)
Active Power Restart (UPS)	Custom colour
Booster	C axis
High Precision Rotary Head	Intelligent Q ³ vic EDM
Linear electrode changer Shuttle ATC	

AQ20L

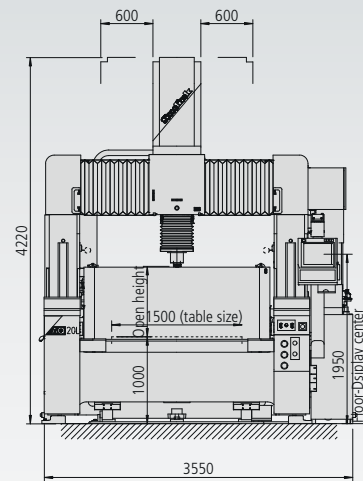
Technical Specifications



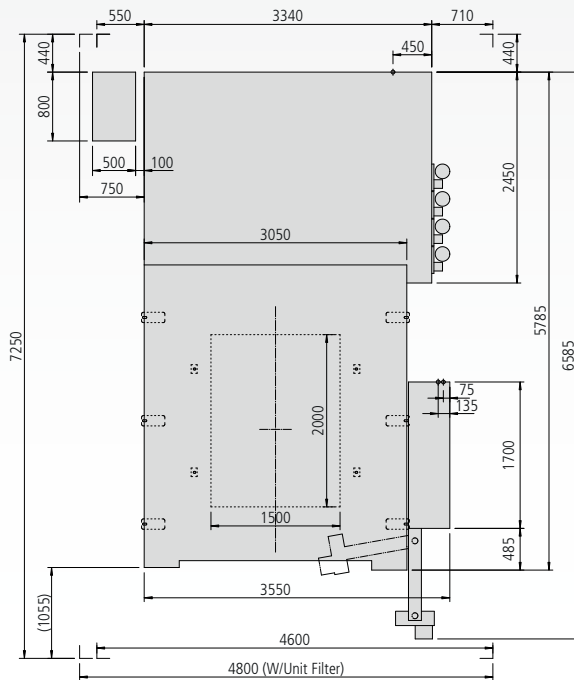
Side View



Front View



Top View



Due to ongoing research, specifications are subject to change without prior notice.

Sodick

create your future

Sodick Europe Ltd.
Rowley Drive, Baginton
Coventry, CV3 4FG
United Kingdom

Sodick Contact

email europa@sodick.eu.com
online www.sodick.org
Phone +44 (0) 24 7621 4314