

Hole Drilling EDM

K3HS



Standard Features

- LK2 controller
- Sodick Motion Controller
- Dielectric fluid cooling unit
- 15" TFT colour screen
- Remote controller
- LN Assist software for optimum condition search
- Automatic depth measurement
- Through-hole detection
- AEF (Automatic Electrode Feeder)
- Spindle with max. 1,000 rpm
- LAN interface
- USB port
- Work light

Technical Specifications

X/Y/Z axis travel (mm)	300 x 400 x 300
W-axis stroke (mm)	230 (NC control: option)
Table dimensions (mm)	480 x 790
Work-tank dimensions (W x D x H, mm)	470 x 780 x 285
Max. work-piece weight (kg)	300
Distance from guide bottom to table top (mm)	55 ~ 285
Electrode diameter (mm)	0.25 ~ 3.0
Distance from floor to table top (mm)	640
Machine tool dimensions (W x D x H, mm)	1,495 x 1,340 x 2,255
Machine installation space (W x D mm)	1,495 x 1,740
Machine weight (kg)	1,280
Total power input	3-phases, 50/60Hz, 6.5KvA

Options

Column up (100/200mm)
Intermediate guide
Rotary table
Oscilloscope
W-axis digital
LK20 – 8-axis controller

Dielectric tank

External dim. (W x D x H, mm)	705x435x1,410
Weight (empty, kg)	175
Dielectric fluid	De-ionized Water or Vitol fluid
Capacity (l)	150
Filtration method	Replaceable paper filter (HF-17)



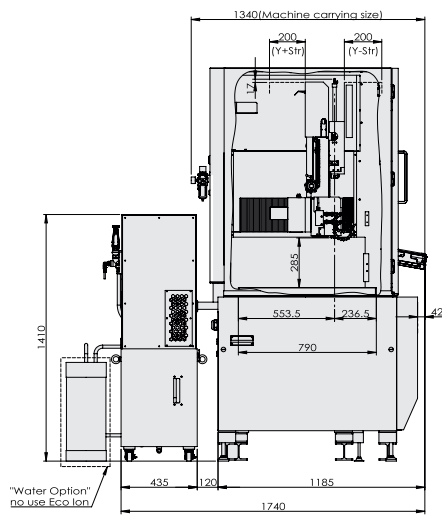
create your future

Hole Drilling EDM

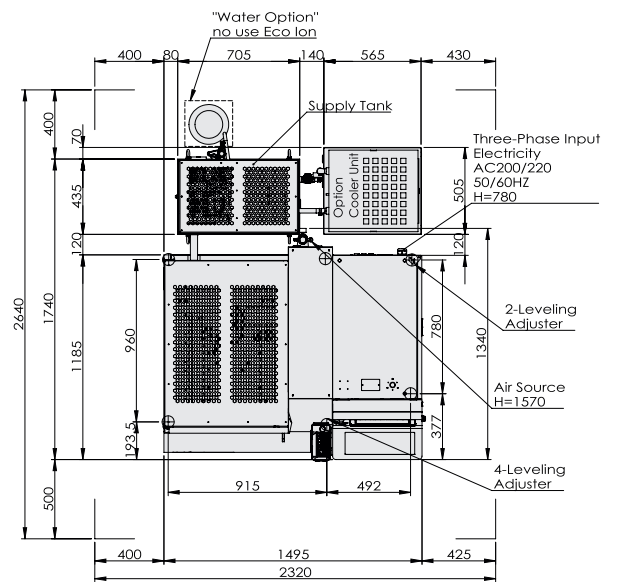
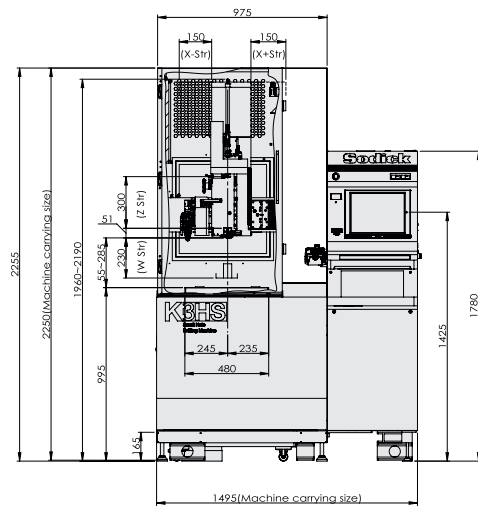
K3HS



Side View



Front View



Top View

Due to ongoing research, specifications are subject to change without prior notice.



Sodick Europe Ltd.

Agincourt Road
Warwick, CV34 6XZ
United Kingdom

create your future

Sodick Contact

Phone +44 (0) 19 2669 8888
email europe@sodick.eu.com
online www.sodick.org